

HENAN EXCELLENT MACHINERY CO.,LTD

BULK MATERIAL HANDLING



CONVEYOR IDLER/ROLLER

Company profile

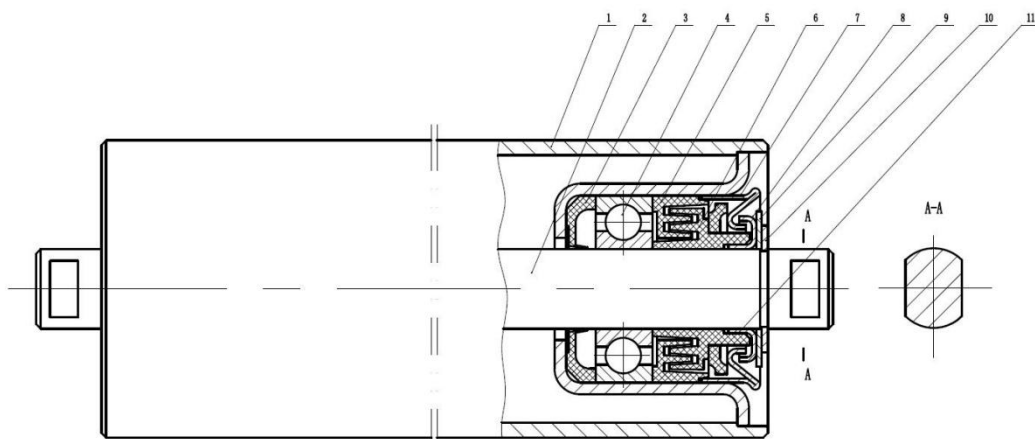
EXCT is a high-tech enterprise integrating technology research, development, manufacture and sales. With a professional and rich experience team, the company has also introduced a complete scientific management system. It has passed ISO9001:2008 quality management system certification.

At present, EXCT adopts internationally advanced manufacturing technology, using a fully automatic production line and has a fundamental difference between the processes used by domestic manufacturers. The internal stress and thermal deformation generated during the manufacturing process are greatly reduced, and the cumulative error caused by multiple assembly and positioning is avoided, so that the overall error such as coaxiality, cylindricity and concentricity is always maintained at no more than 0.10MM. Finally, the accuracy requirements of the product are ensured, so that the product's rotation resistance, dustproof and waterproof performance, corrosion resistance and energy saving performance are higher than the national standard. The service life of the product can reach more than 50,000 hours, and the damage rate is not more than 5%. The product quality is stable and stable, and it can realize continuous and efficient professional production. The annual output can reach more than 1 million. According to the MT821-1999 standard, the average quality of the first-time product is over 99%.

EXCT conveyor roller has been widely used in mining, metallurgy, coal, coking, port, electricity, building materials, food and other industries, and has a high market share in the domestic and overseas market. It is very popular among customers, and it is an ideal accessory product for conveying equipment.



Conveyor idler structure & production technology process



- 1. Tube
- 2. Shaft
- 3. Seal Ring
- 4. Bearing
- 5. Inner Seal Ring
- 6. Out Seal Ring
- 7. Inner Washer
- 8. Out Washer
- 9. Seal Plate
- 10. Seal Ring
- 11. Lip Seal



Automatic chamfering cutting machine for steel pipe



Automatic CO2 Gas-shielded Dual-torch welding machine



Double end automatic hole machine tool for steel pipe



Automatic machine tool for Conveyor Roller Press Assembly



Roller automatic painting production line



Roller automatic painting production line



Roller automatic painting production line

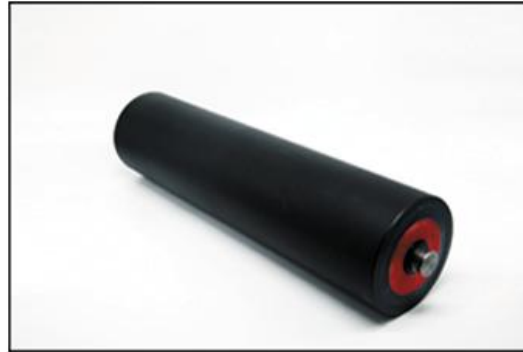
Conveyor idler advantage

- Supply the various sizes of steel rollers to meet customers' require.
- Automatic simultaneous welding, CNC milling of bearing housings.
- Use cold drawn round steel with high surface accuracy as the shaft material.
- Adopt precision deep-groove ball bearing of international well-known brand.
- The roller has good dynamic and static balance performance.
- Low roller drag and friction to protect the belt.
- Uniquely labyrinth seals design for definitely water/dust proof.
- Low total indicated runout (T.I.R.), Less vibration.
- Making sure long lifetime operation.

Conveyor idler category



Carring idler



UHMW-PE Roller



Impact idler



Return idler



Comb idler



Spiral idler



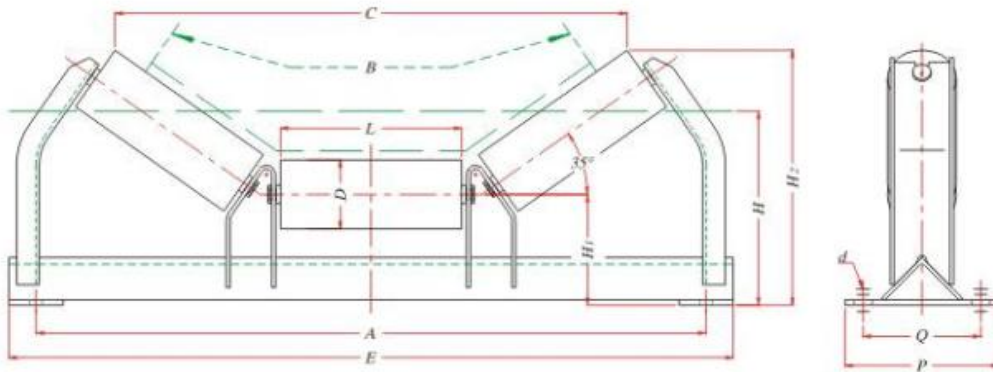
Trough idler



Training conveyor idler

Conveyor idler Specifications

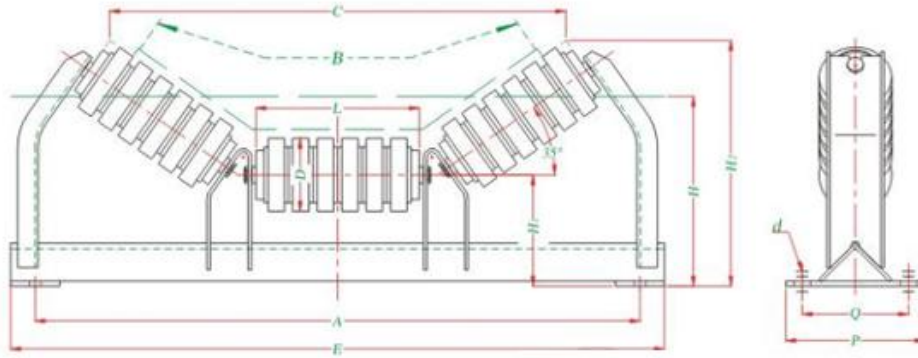
Trough type idler set



DTIIA Trough type set 30° 35° 45°

Width	Roller				A	E	H1	H2		P	Q	d	Chart NO	
	D	L	Spec	Bearing /C3				35°	45°				35°	45°
500	63.5	200	89-204-200	6204	740	800	119	272	300	170	130	M12	50C114	50C115
	76		89-204-200	6204			122	284	301				50C214	50C215
	89		89-204-200	6204			135.5	298	328				50C314	50C315
650	76	250	89-204-200	6204	890	950	122	312	342	170	130	M12	65C214	65C215
	89		89-204-200	6204			135.5	327	364				65C314	65C315
	108		108-205-200	6205			146	346	381				65C414	65C415
800	89	315	89-204-200	6204	1090	1150	135.5	364	410	170	130	M12	80C314	80C315
	108		108-205-200	6205			146	383	427				80C414	80C415
	133		133-305-315	6305			159.5	407	455				80C514	80C515
1000	108	380	108-205-380	6205	1290	1350	159	437	487	220	170	M16	100C414	100C415
	133		133-305-380	6305			173.5	461	515				100C514	100C515
1200	108	465	108-205-465	6205	1540	1600	176	502	564	260	200	M16	120C414	120C415
	133		133-305-465	6305			190.5	527	592				120C514	120C515
	159		159-306-465	6306			207.5	556	618				120C614	120C615
1400	108	530	108-205-530	6205	1740	1800	184	548	618	280	220	M16	140C414	140C415
	133		133-305-530	6305			198.5	573	646				140C514	140C515
	159		159-306-530	6306			215.5	602	672				140C614	140C615
1600	133	600	133-306-600	6306	1980	2050	212.5	629	721	300	240	M16	160C614	160C615
	159		159-306-600	63306			225.5	653	734				160C714	160C715
	159		159-307-600	6307			225.5	653	734				160C814	160C815
1800	133	670	133-306-670	6306	2180	2250	212.5	670	770	340	270	M16	180C614	180C615
	159		159-308-670	6308			225.5	693	783				180C714	180C715
	194		194-307-670	6307			247	714	805				180C814	180C815
2000	159	750	159-308-750	6308	2420	2500	235.5	749	850	340	270	M16	200C614	200C615
	194		194-308-750	6308			252.5	783	884				200C714	200C715

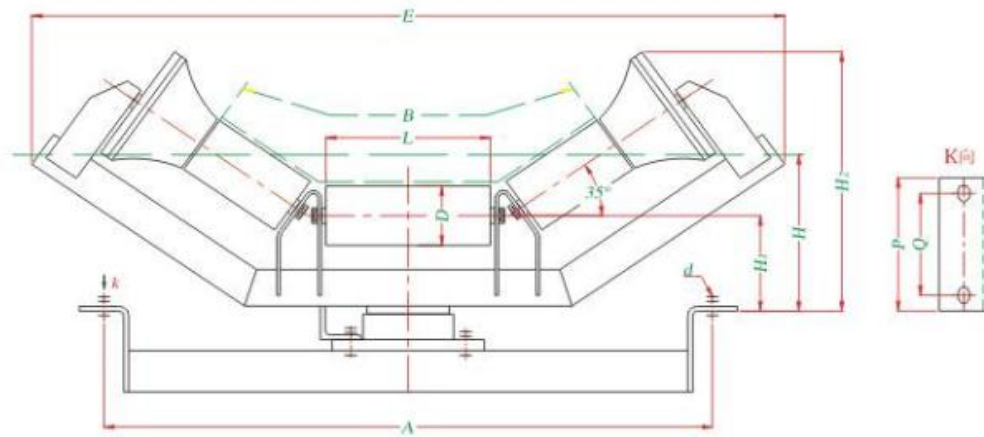
Impact type idler set



Note: A device to secure the middle frame is included in this unit.

DTIIA Impact type idler set														
Width	Roller				A	E	H1	H2		P	Q	d	Chart NO	
	D	L	Spec	Bearing /C3				35°	45°				35°	45°
500	89	200	89-204-200	6204	740	800	135.5	298	328	170	130	M12	50C314H	50C315H
650	89	250	89-204-250	6204	890	950	135.5	327	364	170	130	M12	65C314H	65C315H
	108	250	108-205-250	6205	890	950	146	346	381	170	130	M12	65C314H	65C415H
800	89	315	89-204-315	6204	1090	1150	135.5	364	410	170	130	M12	80C314H	80C315H
	108		108-205-315	6205			146	383	427				80C414H	80C415H
	133		133-306-315	6306			159.5	409	455				80C514H	80C515H
1000	108	380	108-305-380	6305	1290	1350	159	437	487	220	170	M16	100C414H	100C415H
	133		133-306-380	6306			173.5	461	515				100C514H	100C515H
	159		159-308-380	6308			190.5	490	543				100C614H	100C615H
1200	108	465	108-305-465	6305	1540	1600	176	502	564	260	200	M16	120C414H	120C415H
	133		133-306-465	6306			190.5	527	592				120C514H	120C515H
	159		159-308-465	6308			207.5	556	618				120C614H	120C615H
1400	108	530	108-305-530	6305	1740	1800	184	548	618	280	220	M16	140C414H	140C415H
	133		133-306-530	6306			198.5	573	646				140C514H	140C515H
	159		159-308-530	6308			215.5	602	672				140C614H	140C615H
1600	133	600	133-306-600	6306	1980	2050	215.5	629	721	300	240	M16	160C614H	160C615H
	159		159-307-600	6307			225.5	653	734				160C714H	160C715H
	159		159-308-600	6308			225.5	653	734				160C814H	160C815H
1800	133	670	133-306-670	6306	2180	2250	212.5	670	770	340	270	M16	180C614H	180C615H
	159		159-307-670	6307			25.5	693	783				180C714H	180C715H
	194		194-308-670	6308			247	714	805				180C814H	180C815H
2000	159	750	159-308-750	6308	2420	2500	235.5	749	850	340	270	M16	200C614H	200C615H
	194		194-308-750	6308			252.5	783	884				200C714H	200C715H
	194		194-309-750	6309			252.5	783	884				200C814H	200C815H

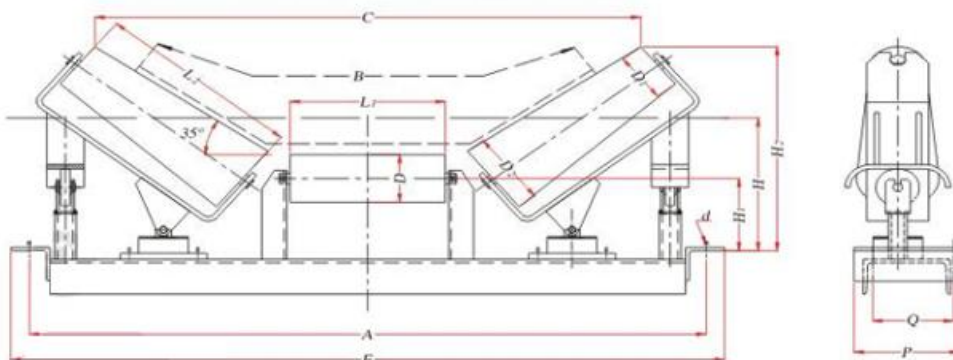
Friction-uppe Algnig idler set



Friction-uppe Algnig idler set

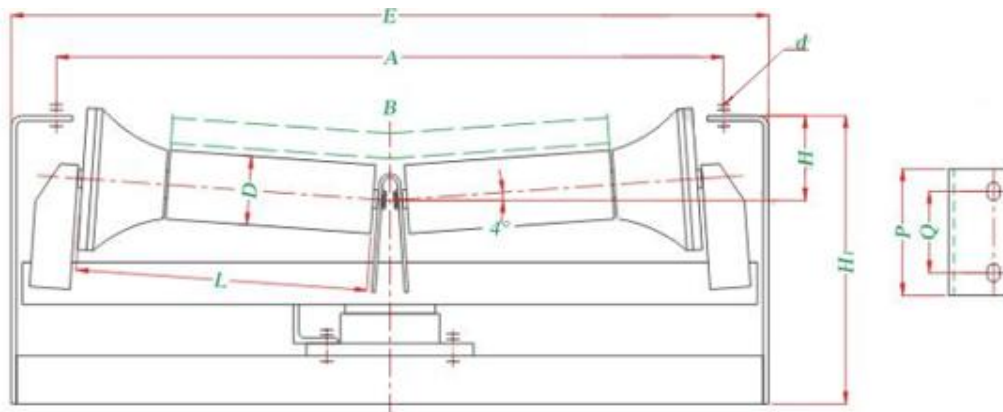
Width	Roller				A	E	H1	H	H2	P	Q	d	Chart NO
	D	L	Spec	Bearing /C3									
500	89	200	89*204*230	6204	740	912	135.5	220	350	170	130	M12	50C314M
650	89	250	89*204*280	6204	890	1055	135.5	235	379	170	130	M12	65C314M
	108	250	108*205*280	6205	890	1100	146	265	381	170	130	M12	65C414M
800	89	315	89*204*323	6204	1090	1183	135.5	245	414	170	130	M12	80C314M
	108		108*205*342	6205		1243	146	270	442	170	130	M12	80C414M
			108*205*195	6205									
1000	108	380	133*305*112	6205	1290	1439	159	300	492	220	170	M16	100C414M
	133		108*205*470	6305		1520	173.5	325	540				100C514M
1200	108	465	133*305*470	6205	1540	1639	176	335	544	260	200	M16	120C414M
	133		159*305*470	6305		1715	190	360	590				120C514M
	159		108*205*560	6306		1717	207	390	618				120C614M
1400	108	530	133*305*560	6205	1740	1814	184	350	590	280	220	M16	140C414M
	133		159*306*560	6305		1887	198	380	635				140C514M
	159		159*306*630	6306		1895	215	410	653				140C614M
1600	159	630	159*306*630	6306	1980	2050	247	450	780	300	240	M16	160C714M
				6307		2050	247	450	780				160C814M

Conical-uppe Algnig idler set



Conical-uppe Algning idler set													
Width	Roller				A	E	H1	H	H2	P	Q	d	Chart NO
	D	L	Spec	Bearing /C3									
800	108	250	89/108*205*340	6250	1090	1150	146	270	395	170	130	M12	80C414Z
	133		108/159*305*340	6305			159.6	296	422	170	130	M12	80C514Z
1000	133	315	108/133*305*415	6305	1290	1350	173.5	325	478	220	170	M16	100C514Z
	159		108/159*306*415	6306			190.5	355	508	220	170	M16	100C614Z
1200	133	380	108/176*305*500	6305	1540	1600	190.5	360	548	260	200	M16	120C514Z
	159		133/194*306*500	6306			207.5	390	578				120C614Z
1400	133	465	108/176*305*550	6305	1740	1800	198.5	380	584	280	220	M16	140C514Z
	159		133/194*306*550	6306			215.5	410	615	280	220	M16	140C614Z
1600	159	530	133/219*307*600	6307	2050	1980	225.5	465	750	300	240	M16	160C714Z
	159		133/219*308*600	6308			225.5	465	750	300	240	M16	160C814Z

Friction-under Algning idler set

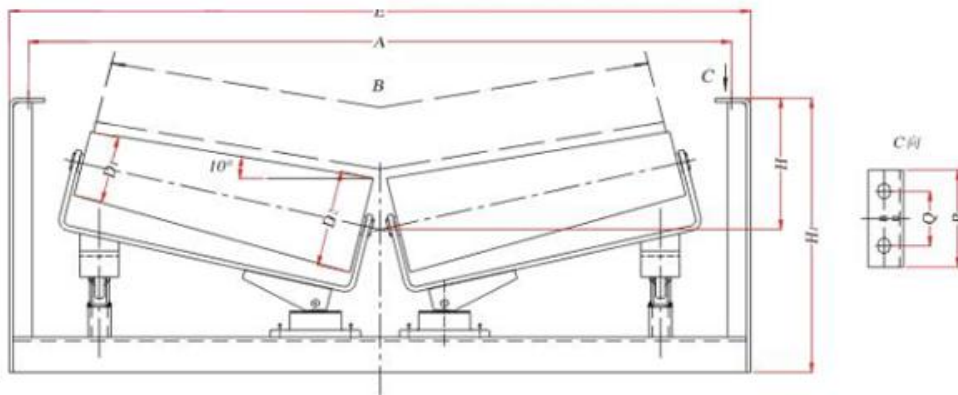


Note: A device to secure the middle frame is included in this unit.

Friction-under Algning idler set												
Width	Roller				A	E	H1	H	P	Q	d	Chart NO
	D	L	Spec	Bearing /C3								
500	89	323	89*204*323	6204	740	840	100	334	130	90	M12	50C316M
650	89	398	89*204*398	6204	890	990	100	323	130	90		65C361M

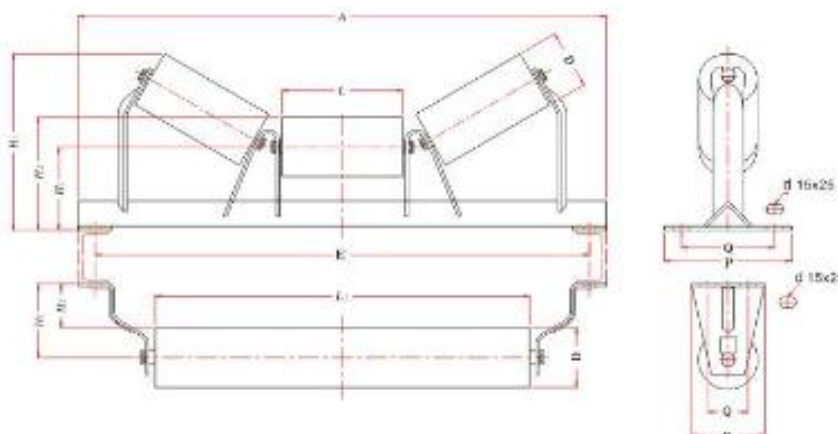
	108		108*205*398	6205			109.5	358.5				65C461M
800	89	488	89*204*488	6204	1090	1190	144.5	367.5	130	90		80C361M
	108		108*205*488	62205			154	396				80C461M
	133		133*305*488	6305			166.5	427				80C561M
1000	108	590	108*205*590	6205	1290	1376	164	411	130	90	M16	100C4611M
	133		133*305*590	6305			176.5	443				100C561M
	159		159*306*590	6306			189.5	476				100C661M
1200	108	690	108*205*690	6205	1540	1626	174	426	130	90	M16	120C461M
	133		133*305*690	6305			186.5	460				120C561M
	159		159*306*690	6306			199.5	520				120C661M
1400	108	790	108*205*790	6205	1740	1826	184	441	130	90	M16	140C461M
	133		133*305*790	6305			198.5	463.5				140C561M
	159		159*306*790	6306			209.5	527.5				140C651M

Conical-under Algnig idler set



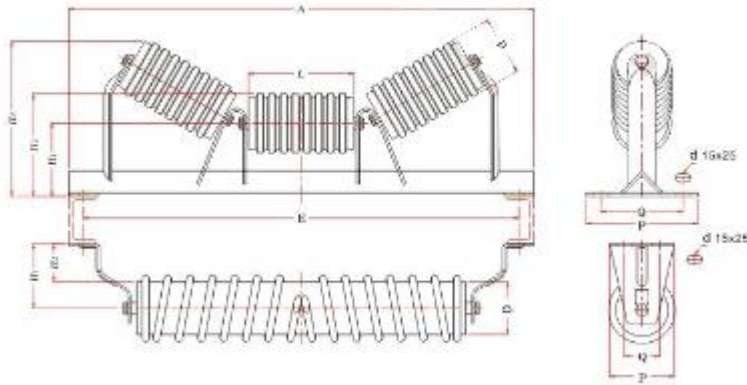
Conical-under Algnig idler set													
Width	Roller					A	E	H	H1	P	Q	d	Chart NO
	D	D2	L	Spec	Bearing/C3								
800	108	159	445	108/159*305*445	6305	1090	1150	217	452	160	90	M16	80C461Z
1000	108	176	560	108/176*305*560	6305	1290	1350	254	532	160	90	M16	100C461Z
1200	108	194	680	108/194*306*680	6306	1540	1600	272	557	180	90	M16	120C461Z
1400	108	194	780	108/194*306*780	6306	1740	1800	291	578	180	90	M16	140C461Z

Japan standard carrler idler



Japan standard carrler idler											
width	Roller				A	E	H1	H2	P	Q	d
	D	L	Spec	Bearing/C3							
400	89	145	89-204-145	6204	640	690	125	247	19 0	140	M12
450	89	165	89-204-165	6024	690	740	125	257	19 0	140	M12
500	89	180	89-204-180	6024	740	790	125	264	19 0	140	M12
600	89	210	89-204-210	6024	840	890	140	294	20 0	150	M12
750	114	265	114-204-265	6024	1040	1090	150	344	21 0	160	M12
900	114	315	114-204-315	6024	1190	1240	150	369	21 0	160	M12
1050	139	370	139-205-370	6205	1340	1390	180	440	23 0	180	M12
1200	139	420	139-205-420	6205	1490	1540	180	465	23 0	180	M12
1400	165	500	165-206-500	6206	1730	1795	25	589	34 0	280	M12
1600	165	580	165-306-580	6306	1930	1995	250	629	34 0	280	M16
1800	165	650	165-307-650	6207	2220	2285	280	693	39 0	330	M16
2000	165	730	165-307-730	6307	2420	2485	280	734	39 0	330	M16

Japan standard impact&spirl idler



Japan standard impact idler											
width	Roller				A	E	H1	H2 30°	P	Q	d
	D	L	Spec	Bearing/C3							
400	100	145	89*204*145	6204	640	690	125	251	190	140	M12
450	100	165	89*204*165	6024	690	740	125	261	190	140	M12
500	100	180	89*204*180	6024	740	790	125	268	190	140	M12
600	100	210	89*204*210	6024	840	890	140	298	200	150	M12
750	115	25	114*204*265	6024	1040	1090	150	344	210	160	M12
900	115	315	114*204*315	6024	1190	1240	150	369	210	160	M12
1050	140	370	139*205*370	6205	1340	1390	180	440	230	180	M12
1200	140	420	139*205*420	6205	1490	1540	180	465	230	180	M12
1400	165	500	165*206*500	6206	1730	1795	250	589	340	280	M12
1600	165	580	165*206*580	6206	1930	1995	250	629	340	260	M16
1800	165	650	165*207*650	6207	2220	2285	280	693	390	330	M16
2000	165	730	165*307*730	6307	2420	2485	280	734	390	330	M16

Japan standard spiral idler										
width	Roller				H1	H2	P	Q	d	
	D	L	Spec	Bearing/C3						
400	100	460	89*204*460	6204	60	110	110	60	M12	
450	100	510	89*204*510	6204	60	110	110	60	M12	
500	100	560	89*204*560	6204	60	110	110	60	M12	
600	100	660	89*204*660	6204	60	110	110	60	M12	
750	115	850	114*204*850	6204	53	110	110	60	M12	
900	115	1000	114*204*1000	6204	53	110	110	60	M12	
1050	139	1150	139*205*1150	6205	60	130	150	100	M12	
1200	139	1300	139*205*1300	6205	60	130	150	100	M12	
1400	165	1530	165*206*1530	6206	78	160	180	120	M12	

1600	165	1730	165*206*1530	6206	78	160	180	120	M16
1800	165	2000	165*207*2000	6207	78	160	180	120	M16
2000	165	2200	165*307*2200	6307	78	160	180	120	M16

Parallel lower idler set



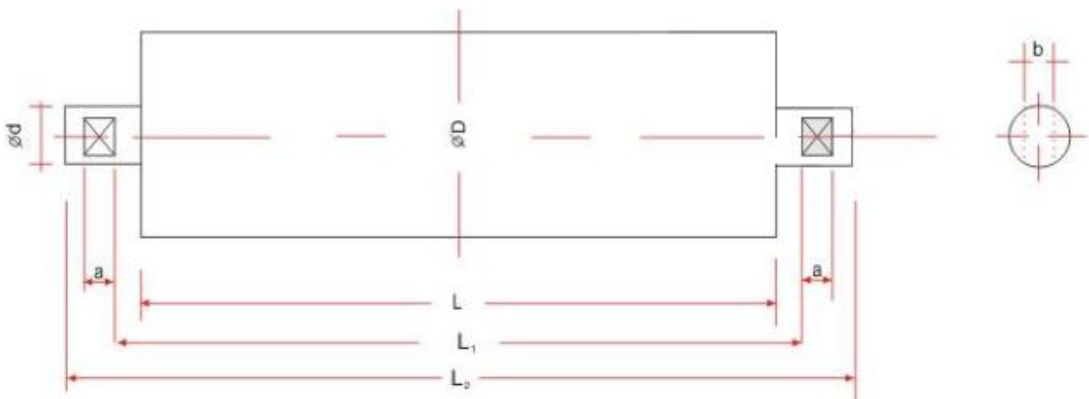
DTIIA Parallel lower idler set

Width	Roller						A	E	H	P	Q	d	Chart NO		
	D	L	A Flat idler	B Spiral idler	C Comb idler	Bearing/C3							A Flat idler	B Spiral idle	C Comb idler
500	89	600	89*204*600	89*204*600	89*204*600	6204	740	792	100	145	90	M12	50C360		50C360S
650	89	750	89*204*750	89*204*750	89*204*750	6204	890	942	100	145	90	M12	65C360	65C360L	65C360S
	108		108*205*750	108*205*750	108*205*750	6205	890	942	109.5	145	90		65C460	65C460L	65C460S
800	89	950	89*204*950	89*204*950	89*204*950	6204	1142	1090	144.5	145	90	M16	80C360	80C360L	80C360S
	108		108*205*950	108*205*950	108*205*950	6205			154	145	90		80C460	80C460L	80C460S
	133		133*305*950	133*305*950	133*305*950	6305			166.5	145	90		80C560	80C560L	80C560S
1000	108	1150	108*205*1150	108*205*1150	108*205*1150	6205	1342	1290	164	150	90	M16	100C460	100C460L	100C460S
	133		133*305*1150	133*305*1150	133*305*1150	6305			176.5	150	90		100C560	100C560L	100C560S

1200	108	1400	108*205*1400	108*205*1400	108*205*1400	6205	1592	1540	174	150	90	M16	120C460	120C460L	120C460S
	133		133*305*1400	133*305*1400	133*305*1400	6305			186.5	150	90		120C560	120C560L	120C560S
	159		159*306*1400	133*306*1400	159*306*1400	6306			199.5	150	90		120C660	120C660L	120C660S
1400	108	1600	108*305*1600	108*305*1600	108*305*1600	6305	1800	1740	184	152	90	M16	140C460	140C460L	140C460S
	133		133*305*1600	133*305*1600	133*305*1600	6305			196.5	150	90		140C560	140C560L	140C560S
	159		159*307*1600	159*307*1600	159*307*1600	6306			209.5	150	90		140C660	140C660L	140C660S
1600	133	1800	133*306*1800	133*306*1800	133*306*1800	6306	1980	2050	231.5	300	240	M16	160C460	160C460L	160C460S
	159		159*307*1800	159*307*1800	159*307*1800	6307			244.5	300	240		160C560	160C5600L	160C560S
	159		159*308*1800	159*308*1800	159*308*1800	6307			244.5	300	240		160C660	160C660L	160C660S
1800	133	2000	133*306*2000	133*306*2000	133*306*2000	6306	2180	2250	236.5	340	270	M16	180C560C	180C560L	180C560S
	159		159*308*2000	159*308*2000	159*308*2000	6308			249.5	340	270		180C660	180C660L	180C660S
	194		194*308*2000	194*308*2000	194*308*2000	6307			267	340	270		180C760	180C760L	180C760S

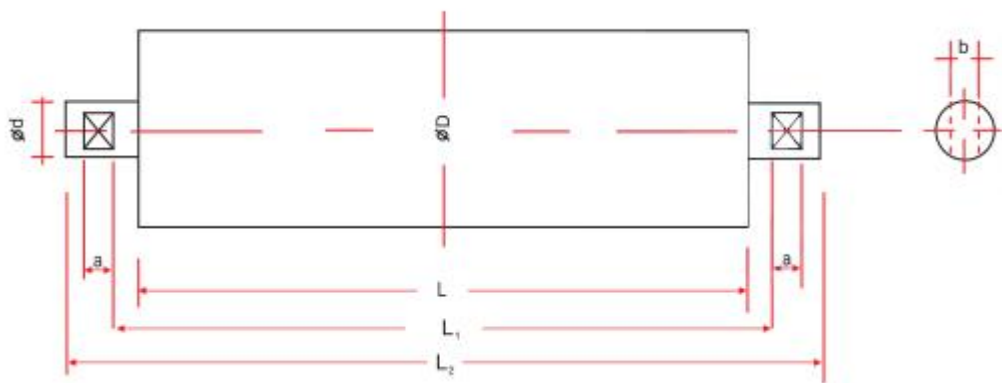
2000	159	2200	159*309*2200	159*309*2200	139*309*2200	6308	2420	2500	280	340	270	M16	200C560	200C560L	200C560S
	194		194*309*2200	194*309*2200	139*309*2200	6308			297	340	270		200C660	200C660L	200C660S

carrier idler&sag return idler



Carrier idler&sag return idler									
width	Roller				H1	H2	P	Q	d
	D	L	Spec	Bearing/C3					
400	89	460	89*204*460	6204	65	110	110	60	M12
450	89	510	89*204*510	6204	65	110	110	60	M12
500	89	560	89*204*560	6204	65	110	110	60	M12
600	89	660	89*204*660	6204	65	110	110	60	M12
750	114	850	114*204*850	6204	53	110	110	60	M12
900	114	1000	114*204*1000	6204	53	110	110	60	M12
1050	139	1150	139*205*1150	6205	60	130	150	100	M12
1200	139	1300	139*205*1300	6205	60	130	150	100	M12
1400	165	1530	165*206*1530	6206	78	160	180	120	M16
1600	165	1730	165*206*1530	6206	78	160	180	120	M16
1800	165	2000	165*207*2000	6207	78	160	180	120	M16
2000	165	2200	165*307*2200	6207	78	160	180	120	M16

Polyethylene idler



Polyethylene idler									
Width	Roller		D	d	L	L1	L2	a	b
	Spec	Bearing/C3							
400	89-204-145	6204	89	20	145	155	177	8	14
450	89-204-165	6024	89	200	165	175	197	8	4
500	89-204-200	6204	89	20	200	210	222	8	14
650	89-204-250	6024	89	20	250	260	282	8	14
800	108-204-315	6204	108	20	315	325	247	8	14
1000	108-205-380	6024	108	20	380	390	412	8	14
1200	127-205-465	6205	127	25	465	475	500	11	18
1400	159-306-530	6206	159	30	530	50	555	11	22

Polyethylene idler									
Width	Roller		D	d	L	L1	L2	a	b
	Spec	Bearing/C3							
400	89-204-460	6204	89	20	460	470	482	8	14
450	89-204-510	6204	89	20	510	520	532	8	14
500	89-204-600	6204	89	20	560	570	582	8	14
650	89-204-660	6204	89	20	660	670	682	8	14
800	108-205-950	6205	108	25	950	960	972	8	18
1000	108-205-1150	6205	108	25	1150	1160	1172	8	18
1200	127-205-1400	6205	127	25	1400	1410	1425	11	18
1400	159-306-1600	6306	159	30	1600	1610	1625	11	22

Conveyor idler Case

Conveyor Rollers for Inner Mongolia Taiping Mining Co., Ltd.

Project Name: Conveyor rollers for Inner Mongolia Taiping Mining Co., Ltd.

Equipment : Conveyor roller

Material: Various ores

Belt Width: 1400~1800mm

Speed: 3.50 m/s

Quantity:144600

Application Area: Mining

Country/Region: China

Customer Name:Inner Mongolia Taiping Mining Co., Ltd.

Project Time: September 2013



Application of MC Nylon Roller in Alkali Belt Conveyor of Lianyungang Nanhua alkali factory

Project Name: MC Nylon Roller for Lianyungang Nanhua Soda Plant

Equipment : Conveyor roller

Material: Sodium

Belt Width: 1000 mm

Speed: 1.8 m/s

Quantity: 5000

Application Area: Alkali Factory

Country/Region: China

Customer Name: Lianyungang Nanhua Soda Plant

Project Time: May 2010



New Composite Idler for Shandong Shiheng Tegang Group Co., Ltd

Project Name: New Composite Roller in Belt Conveyor of Shandong Shiheng Tegang Group Co., Ltd.

Project Coal Handling System Project

Equipment : Conveyor idler

Material : various ores

Belt Width: 1500 mm

Speed: 1.4 m/s

Quantity: 5300

Application Area: Iron Industry

Country/Region: China

Project Time: 2011

Customer Name: Shandong Shiheng Tegang Group Co., Ltd.



Conveyor Idler for Liaoning Huadian Tieling 2*600MW Coal Handling Project

Conveyor Idler for Liaoning Huadian Tieling 2*600MW Coal Handling Project

Project Name: Liaoning Huadian Tieling Power Generation Co., Ltd. Phase II 2*600MW Expansion Project Coal Handling System Project

Equipment: Conveyor idler

Material : Coal

Belt Width: 1400 mm

Speed: 1.6 m/s

Quantity: 6300

Application Area: Power plant

Country/Region: China

Project Time: 2008

Customer Name: Liaoning Huadian Tieling Power Generation Co., Ltd.



Conveyor Idler for Lianyungang 300,000-ton Ore Wharf Project

Project Name: Lianyungang 300,000-ton Ore Wharf Conveyor Idler Project

Equipment: Conveyor idler

Material: Various ores

Belt Width: 1800 mm

Speed: 3.15m/s

Quantity: 18500

Application Area: Wharf

Country/Region: China

Project Time: February 2013

Customer Name: Lianyungang Port Holding Group Co., Ltd.





EXCT committed to be the best supplier in the world



Henan Excellent Machinery Co.,LTD

Tel : +86 373 5828866

[Https://www.exctmach.com](https://www.exctmach.com)

E-mail : info@exctmach.com

Address : Middle of Xinchang North Line, Xinxiang City, Henan Province,China.