

# FEEDER BREAKER

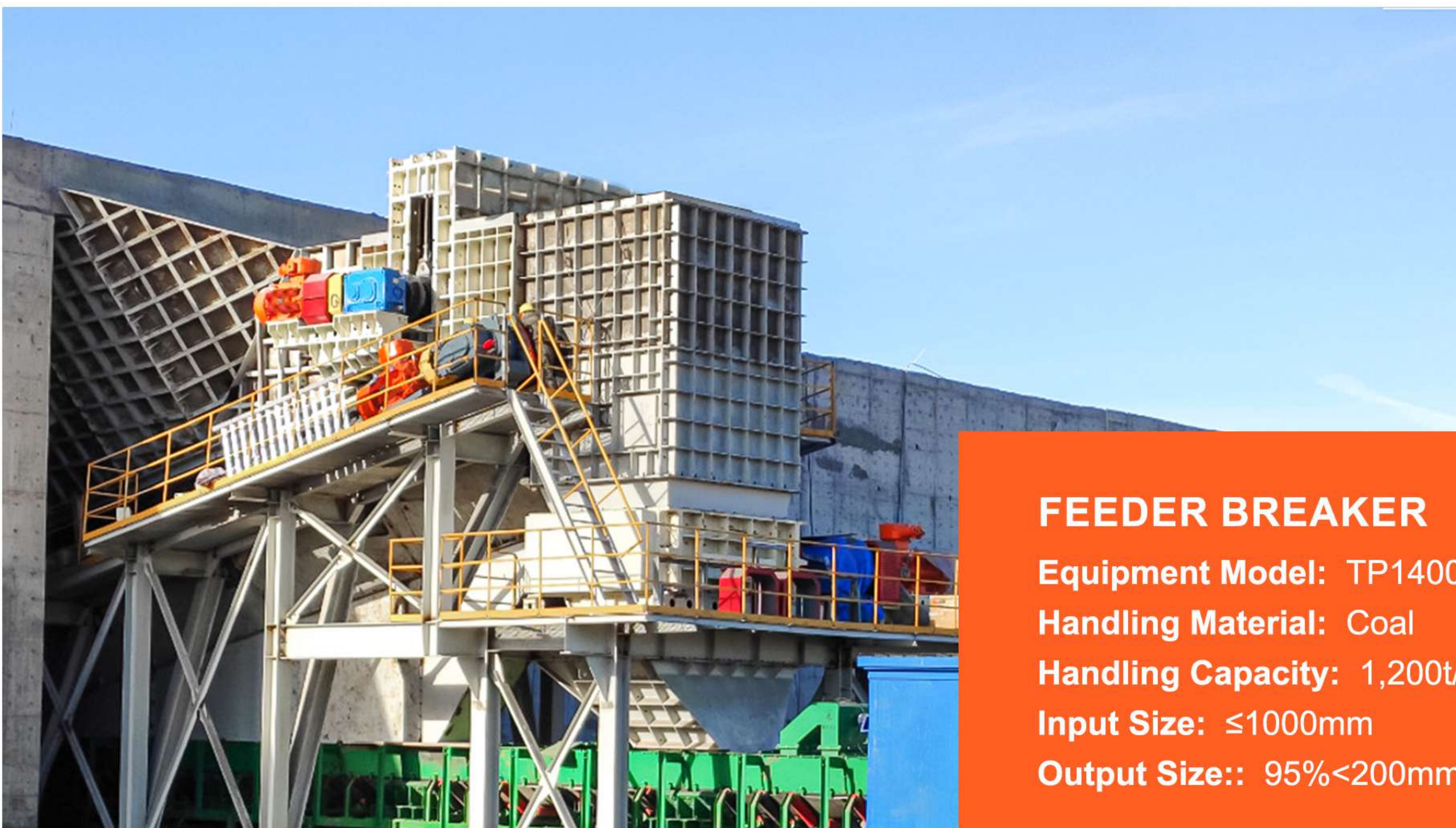
Success Project



SUCCESS

# PROJECT

- Henan Energy And Chemical Construction Group Co., LTD.



## FEEDER BREAKER

Equipment Model: TP1400\*9000mm

Handling Material: Coal

Handling Capacity: 1,200t/h

Input Size:  $\leq 1000\text{mm}$

Output Size:: 95% $< 200\text{mm}$





■ Xinjiang Beishan Mining Co., LTD.



## FEEDER BREAKER

Equipment Model: TP2200\*15000mm

Handling Material: Coal

Handling Capacity: 2,000t/h

Input Size:  $\leq 1500\text{mm}$

Output Size: 95% $< 300\text{mm}$



■ Xinjiang Shengjiang Investment Co., LTD.

**FEEDER BREAKER**

Equipment Model: TP1400\*12000mm

Handling Material: Coal

Handling Capacity: 1,200t/h

Input Size:  $\leq 800\text{mm}$

Output Size: 95% $< 300\text{mm}$



## FEEDER BREAKER

Equipment Model: TP2200\*7000mm    Handling Material: Coal

Handling Capacity: 2,000t/h    Input Size:  $\leq 1100\text{mm}$     Output Size: 95% $<300\text{mm}$

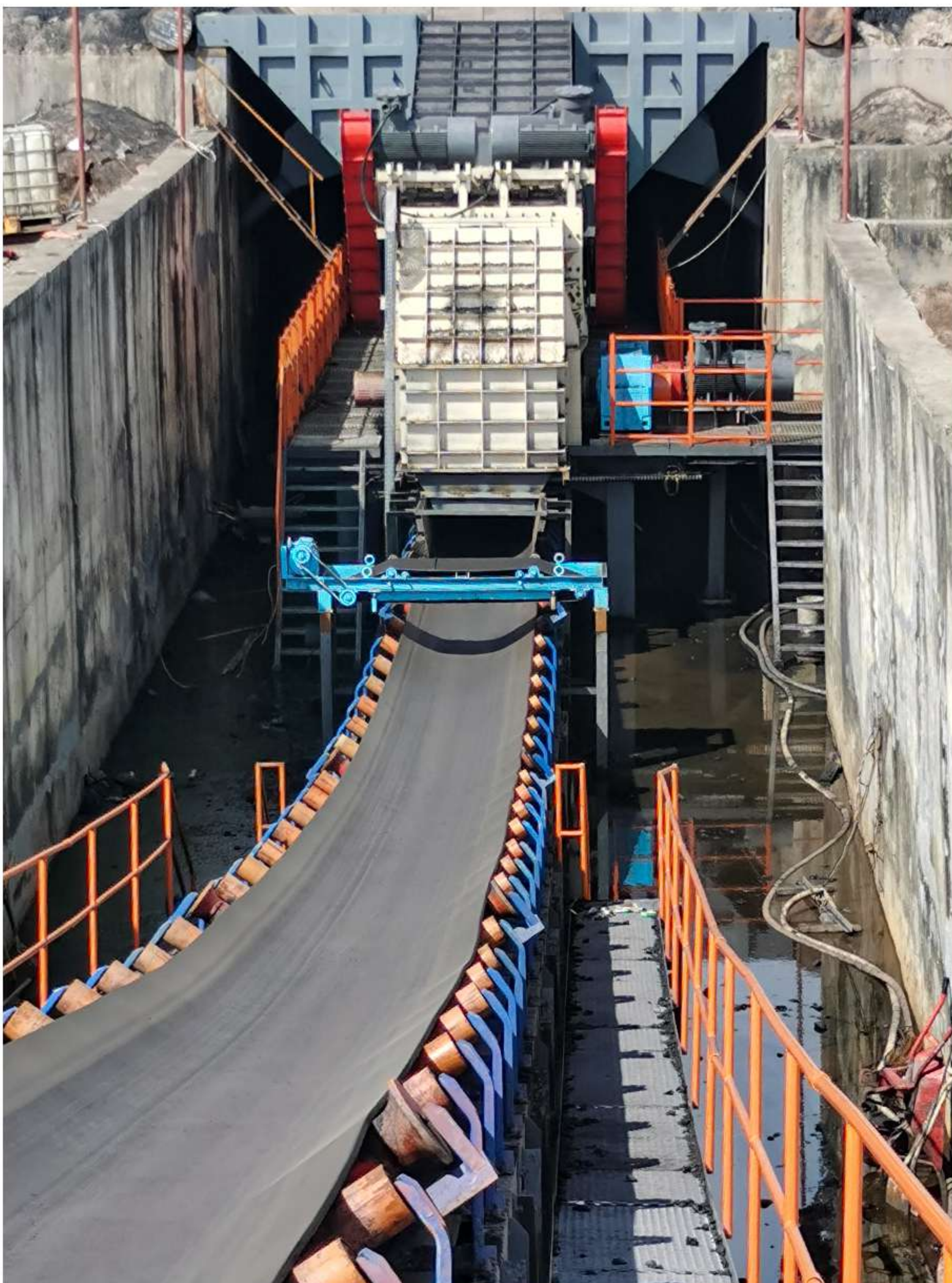


■ Xinjiang Mahatma Energy Co., LTD.





■ Indonesia Crushing Conveying Production System



**FEEDER BREAKER**

Equipment Model: TP1400\*13000mm\*2

Handling Material: Coal

Handling Capacity: 1,500t/h\*2

Input Size: ≤650mm

Output Size: 95%<300mm

■ Yaogou Township Hall Ziyang Coal Mine Co., LTD.



**FEEDER BREAKER**

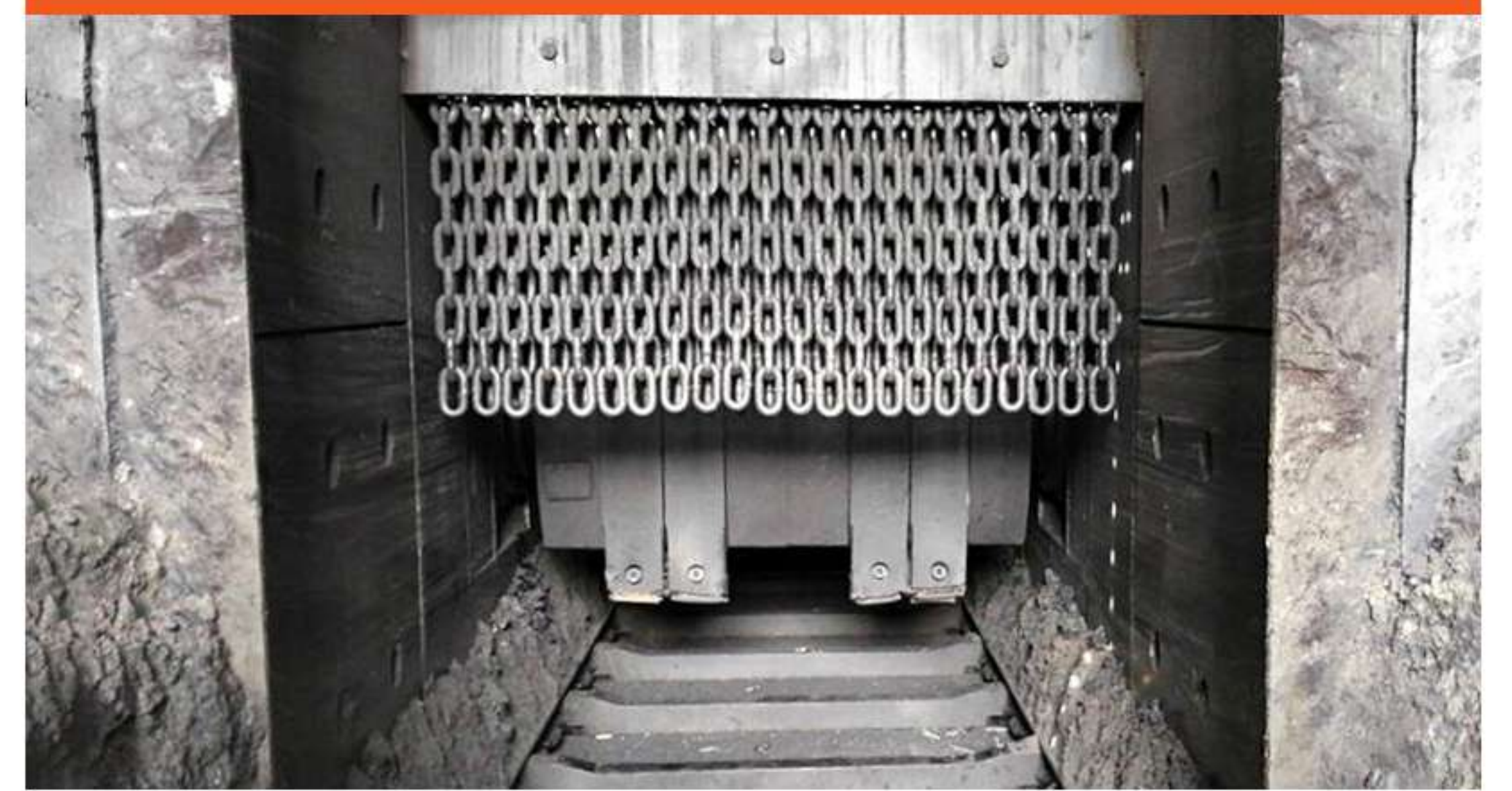
Equipment Model: TP2200\*15000mm

Handling Material: Coal Gangue

Handling Capacity: 1,600t/h

Input Size:  $\leq 1500\text{mm}$

Output Size: 95% $< 300\text{mm}$







■ Xinjiang Tianlong Hope Energy Co., LTD.



**FEEDER BREAKER**

Equipment Model: TP2200\*16000mm

Handling Material: Lump Coal

Handling Capacity: 2,000t/h

Input Size:  $\leq 1000\text{mm}$

Output Size: 95% $< 300\text{mm}$

# LISTS OF COMPLETED PROJECTS

\* : Feeder Breaker Included In The Project

| No. | Equipment Name            | Specification         | Quantity | User  |
|-----|---------------------------|-----------------------|----------|---|
| 1   | * Feeder Breaker          | TP1600-20m            | 1        | Xinjiang Tianlong Hope Energy Limited Company                   |
|     | Hopper                    | 200m <sup>3</sup>     | 1        |   |
|     | Mineral Sizer             | 2XPS120/250           | 1        |   |
|     | Vibrating Screen          | HS3000*5400           | 1        |   |
|     | Belt Conveyor System      | B1400-21.07m          | 1        |   |
|     | Steel Structure           | /                     | 1        |   |
|     | Dust Collector System     | CDMC84-7              | 1        |   |
|     | Electrical Control System | /                     | 1        |   |
| 2   | Hopper                    | 150m <sup>3</sup>     | 1        | Yaojie Coal Group Jiuquan Coal Industry Co. LTD                 |
|     | * Feeder Breaker          | TP2000-12m            | 1        |   |
|     | Mineral Sizer             | 2XPS120/200           | 1        |   |
| 3   | Hopper                    | 200-400m <sup>3</sup> | 3        | Henan Energy and Chemical Industry Construction company limited |
|     | * Feeder Breaker          | TP2600-20.5m          | 1        |   |
|     | Mineral Sizer             | 2XPS140/280           | 1        |   |
|     | Primary Mineral Sizer     | 2XPS100/350           | 2        |   |
|     | Secondary Mineral Sizer   | 2XPS90/250            | 2        |   |
|     | Steel Structure           | /                     | 1        |   |

| No. | Equipment Name            | Specification     | Quantity | User  |
|-----|---------------------------|-------------------|----------|---|
| 4   | Mineral Sizer             | 2XPS100/200       | 1        | Xinjiang Jianguo Weiye<br>New Energy Limited<br>company                             |
|     | * Feeder Breaker          | TP1600-25m        | 1        |   |
|     | Vibrating Screen          | 3YKH3073          | 2        |   |
|     | Vibrating Screen          | YKH3085           | 2        |   |
|     | Vibrating Screen          | YKH3061           | 1        |   |
|     | Vibrating Screen          | YKH1850           | 2        |   |
| 5   | * Feeder Breaker          | TP1400-12m        | 1        | China Construction<br>Xinjiang Construction<br>Engineering Group<br>Limited company |
|     | Mineral Sizer             | 2XPS100/150       | 1        |   |
|     | Vibrating Screen          | 2YKH2150          | 2        |   |
|     | Vibrating Screen          | 3YKH2460          | 2        |   |
| 6   | Steel Structure           | /                 | 1        | Xinjiang Beishan<br>Mining Co. LTD  |
|     | Hopper                    | 100m <sup>3</sup> | 1        |   |
|     | * Feeder Breaker          | TP1600-20m        | 1        |   |
|     | Belt Conveyor System      | /                 | 1        |   |
|     | Electrical Control System | /                 | 1        |   |
| 7   | * Feeder Breaker          | TP 1400-15m       | 2        | PT Mandiri Intiperkasa  |
|     | Roller Screen             | GZS1412           | 2        |   |
|     | Mineral Sizer             | 2XPS100/250       | 2        |   |
|     | Belt Conveyor System      | B1200             | 1        |   |
| 8   | Secondary Mineral Sizer   | 2XPS100/350       | 1        | Xinjiang Beishan<br>Mining Co. LTD  |
|     | * Feeder Breaker          | TP1600-20.5m      | 1        |   |
|     | Vibrating Screen          | 2YKH3682          | 1        |   |
|     | Vibrating Screen          | 2YKH3073          | 1        |   |

| No. | Equipment Name            | Specification | Quantity | User  |
|-----|---------------------------|---------------|----------|---|
| 9   | Steel Structure           | TP1200-13m    | 1        | Xinjiang Beishan Mining Co. LTD                               |
|     | Hopper                    | 2XPS100/200   | 1        |   |
|     | * Feeder Breaker          | B1000         | 1        |   |
|     | Electrical Control System | 2YKH3061      | 1        |   |
|     | Maintenance Device        | 2YKH3061      | 1        |   |
| 10  | Vibrating Screen          | 2YKH3685      | 1        | Xinjiang Guolong Trading Co., LTD                             |
|     | Vibrating Screen          | YKH3673       | 1        |   |
|     | * Feeder Breaker          | TP1400-16m    | 1        |   |
| 11  | * Feeder Breaker          | TP1200-13m    | 1        | Junge Banner Mengxiang Coal Co. LTD                           |
|     | Mineral Sizer             | 2XPS100/200   | 1        |   |
|     | Belt Conveyor System      | B1000         | 1        |   |
|     | Vibrating Screen          | 2YKH3061      | 2        |   |
| 12  | * Feeder Breaker          | TP1600-20.5m  | 1        | Xinjiang Jimsar Energy Source Technology Development Co., LTD |
|     | * Feeder Breaker          | TP1600-11.5m  | 1        |   |
|     | Secondary Mineral Sizer   | 2XPS100/350   | 1        |   |
|     | Belt Conveyor System      | B1400         | 1        |   |
|     | Vibrating Screen          | 2YKH3673      | 1        |   |
|     | Electrical Control system | /             | 1        |   |

| No.                       | Equipment Name          | Specification     | Quantity | User                                   |
|---------------------------|-------------------------|-------------------|----------|--|
| 13                        | Mineral Sizer           | 2XPS100/300       | 1        | Junge Qitingziyan Coal Mine Co. LTD    |
|                           | * Feeder Breaker        | TP1400-16m        | 1        |  |
|                           | Roller Screen           | GZS1610           | 1        |  |
|                           | Vibrating Screen        | 2YKH3061          | 2        |  |
|                           | Roller Screen           | GZS1809           | 1        |  |
|                           | Hopper                  | 150m <sup>3</sup> | 1        |  |
| 14                        | * Feeder Breaker        | TP2400-16m        | 1        | Xinjiang Shengjiang Investment Co. LTD |
|                           | Hopper                  | 220m <sup>3</sup> | 1        |  |
|                           | Vibrating Screen        | 2YKH2473          | 1        |  |
|                           | Roller Screen           | GZS2610           | 1        |  |
|                           | Apron Feeder            | BL2000-13.5m      | 1        |  |
|                           | Vibrating Screen        | 2YKH2460          | 2        |  |
|                           | Mineral Sizer           | 2XPS100/300       | 2        |  |
| Electrical Control system | /                       | 1                 |          |  |
| 15                        | * Feeder Breaker        | TP1600-20m        | 1        | Xinjiang Shengjiang Investment Co. LTD |
|                           | Secondary Mineral Sizer | 2XPS90/350        | 1        |  |
|                           | Belt Conveyor System    | B1600             | 1        |  |
|                           | Vibrating Screen        | 2YKH3673          | 1        |  |




Committed To Be Leader In Bulk Material Handling

# CONTACT US

---

 +86 373 5828866

 +86 18153098776

 [info@exctmach.com](mailto:info@exctmach.com)

 <https://www.exctmach.com>